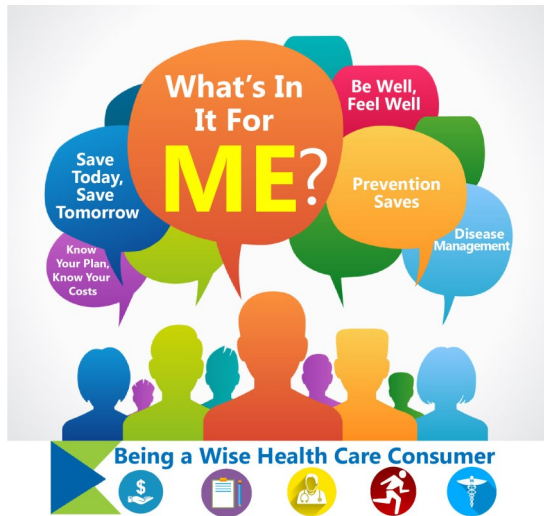




Employee Education Sessions - Come See How The Health Care Choices You Make Affect Your Costs Now And In The Future



Dates: April 19, 21 and 28

Times: 9-10:30am, 12-1:30pm and 5-6:30pm

**Locations: Delaware Technical Community College
(Stanton, Owens and Terry Campuses)**

Engage, ask questions and learn about:

- What's NEW for Open Enrollment 2016
- Being a wise health care consumer and how you can help control and reduce insurance costs and improve your health

Employees who attend the Education Sessions will be placed into a random drawing to win an iPad Mini or a \$50 Amazon gift card (courtesy of Highmark Delaware and Aetna).

Call To Action

Learn more and **register** at www.ben.omb.delaware.gov/oe. Seating is limited, so reserve your spot today!

2 Days Left For The Employee Benefits Consent Campaign - Choose To Receive Your Benefits Information Online Rather Than Through U.S. Mail

Benefit-eligible employees currently enrolled in a State of Delaware health plan (administered by Aetna or Highmark Delaware):

- ⇒ Complete a few simple steps by March 24, 2016 to receive your 2016 Open Enrollment (OE) materials, [notices](#) and other benefits information online rather than through U.S. mail, and be entered into a random drawing to win an iPad Mini or a \$50 Amazon gift card.

Viewing these documents online is convenient, reduces unnecessary paper and saves the State of Delaware thousands of dollars in printing and postage.

Call To Action

Visit <http://ben.omb.delaware.gov/communication.shtml> and follow the "Instructions" located under Employee Benefits Consent Campaign.



This newsletter is published by the Delaware Statewide Benefits Office.

To view other SBO e-Newsletters, visit

<http://ben.omb.delaware.gov/communication.shtml>.